

# IBIS GOLF AND COUNTRY CLUB PLAT NO. 26

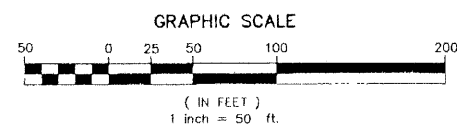
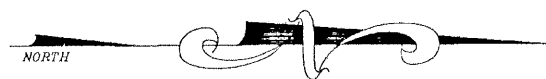
A PLANNED UNIT DEVELOPMENT  
 BEING A REPLAT OF A PORTION OF TRACT "A", IBIS GOLF AND COUNTRY CLUB  
 PLAT NO. 7, AS RECORDED IN PLAT BOOK 87, PAGES 152 THROUGH 168 AND BEING A REPLAT OF A PORTION OF  
 TRACT "A", IBIS GOLF AND COUNTRY CLUB PLAT NO. 14, AS RECORDED IN PLAT BOOK 75, PAGES 107 THROUGH 117  
 LYING IN SECTION 25, TOWNSHIP 42 SOUTH, RANGE 41 EAST,  
 CITY OF WEST PALM BEACH, PALM BEACH COUNTY, FLORIDA

# 133

STATE OF FLORIDA  
 COUNTY OF PALM BEACH  
 THIS PLAT WAS FILED FOR  
 RECORD AT \_\_\_\_\_ M  
 THIS \_\_\_\_\_ DAY OF \_\_\_\_\_  
 A.D. 2001 AND DULY RECORDED  
 IN PLAT BOOK \_\_\_\_\_ ON  
 PAGES \_\_\_\_\_ AND \_\_\_\_\_  
 DOROTHY H. WILKEN  
 CLERK CIRCUIT COURT

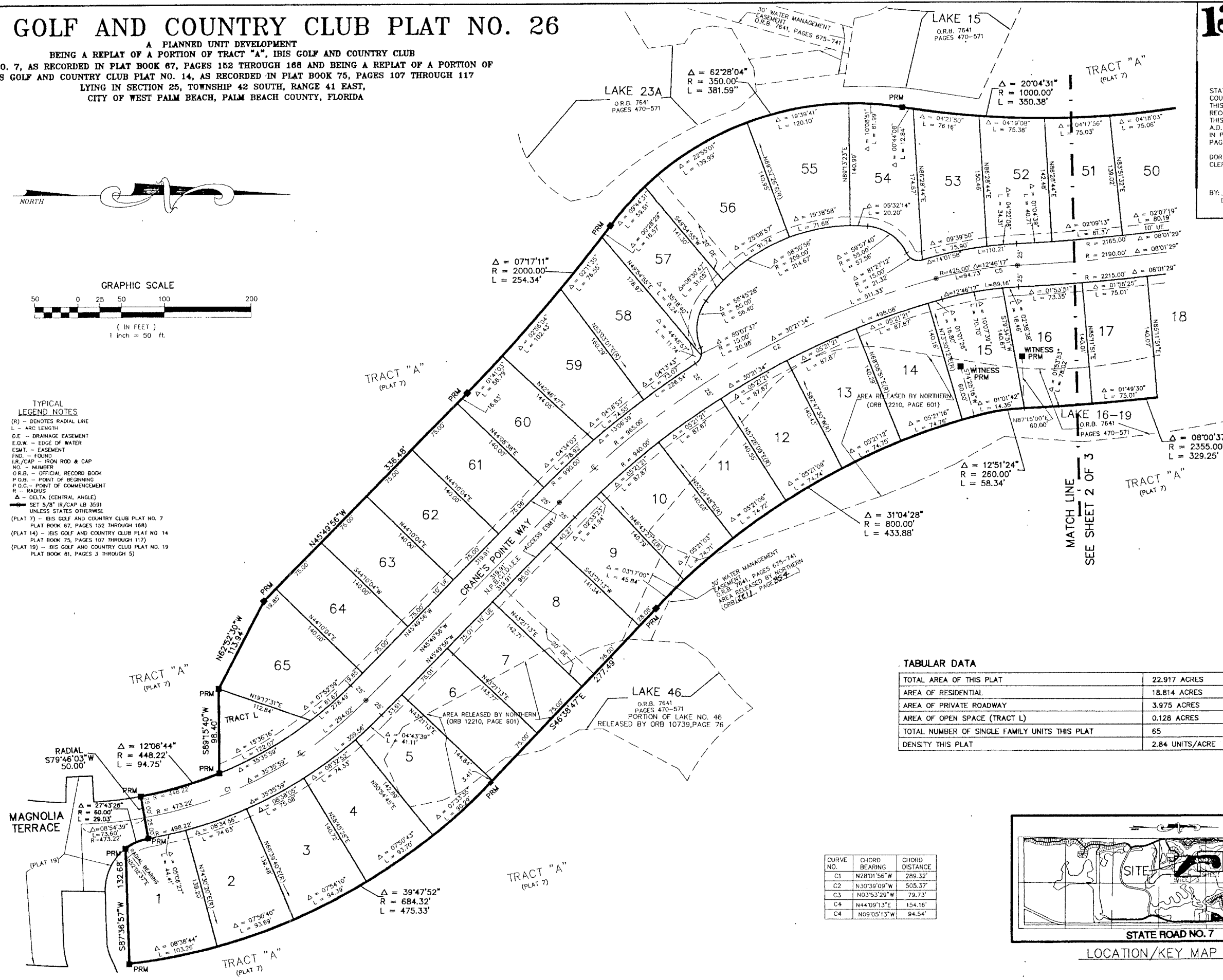
BY: \_\_\_\_\_  
 DEPUTY CLERK

SHEET 3 OF 3



### TYPICAL LEGEND NOTES

- (R) - DENOTES RADIAL LINE
- L - ARC LENGTH
- D.E. - DRAINAGE EASEMENT
- E.O.W. - EDGE OF WATER
- ESMT. - EASEMENT
- FND. - FOUND
- I.R./CAP. - IRON ROD & CAP
- NO. - NUMBER
- O.R.B. - OFFICIAL RECORD BOOK
- P.O.B. - POINT OF BEGINNING
- P.O.C. - POINT OF COMMENCEMENT
- R - RADIUS
- Δ - DELTA (CENTRAL ANGLE)
- SET 5/8" IR/CAP LB 3591 UNLESS STATES OTHERWISE
- (PLAT 7) - IBIS GOLF AND COUNTRY CLUB PLAT NO. 7 PLAT BOOK 87, PAGES 152 THROUGH 168
- (PLAT 14) - IBIS GOLF AND COUNTRY CLUB PLAT NO. 14 PLAT BOOK 75, PAGES 107 THROUGH 117
- (PLAT 19) - IBIS GOLF AND COUNTRY CLUB PLAT NO. 19 PLAT BOOK 81, PAGES 3 THROUGH 5



### TABULAR DATA

TOTAL AREA OF THIS PLAT	22.917 ACRES
AREA OF RESIDENTIAL	18.814 ACRES
AREA OF PRIVATE ROADWAY	3.975 ACRES
AREA OF OPEN SPACE (TRACT L)	0.128 ACRES
TOTAL NUMBER OF SINGLE FAMILY UNITS THIS PLAT	65
DENSITY THIS PLAT	2.84 UNITS/ACRE

CURVE NO.	CHORD BEARING	CHORD DISTANCE
C1	N28°01'56"W	289.32'
C2	N30°39'09"W	505.37'
C3	N03°53'29"W	79.73'
C4	N44°09'13"E	154.16'
C4	N09°05'13"W	94.54'

